

Long Island University

## Digital Commons @ LIU

---

Selected Images from Campus Yearbooks

LIU Post Archives & Special Collections

---

1966

### Opticon 1966

C.W. Post College

Follow this and additional works at: [https://digitalcommons.liu.edu/post\\_yearbooks](https://digitalcommons.liu.edu/post_yearbooks)

---





1966



OPTICON







# OPTICON

C. W. Post College  
Volume VIII

*Editor-in-Chief*  
*Managing Editor*

Tom Rauffenbart  
Gerry Burger

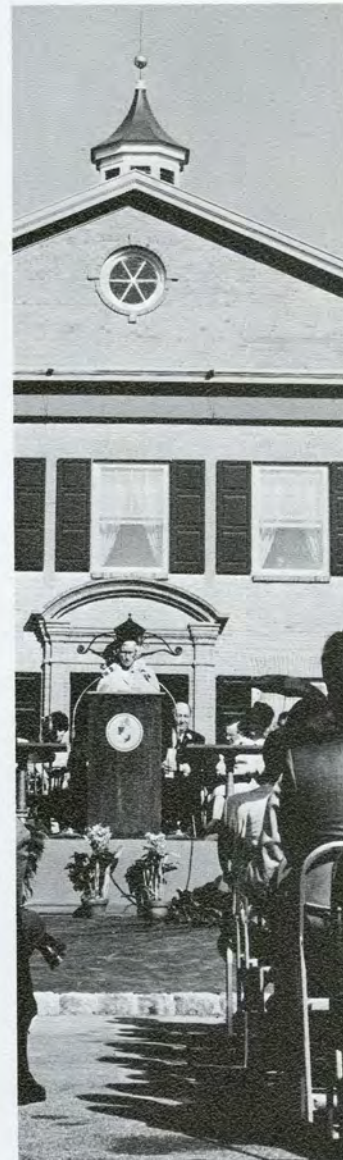
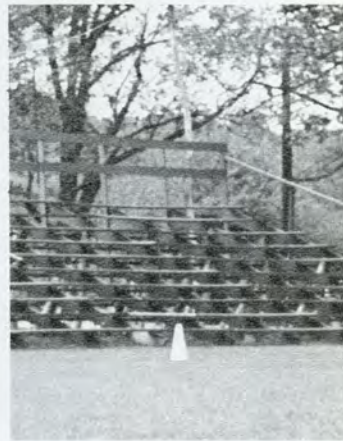
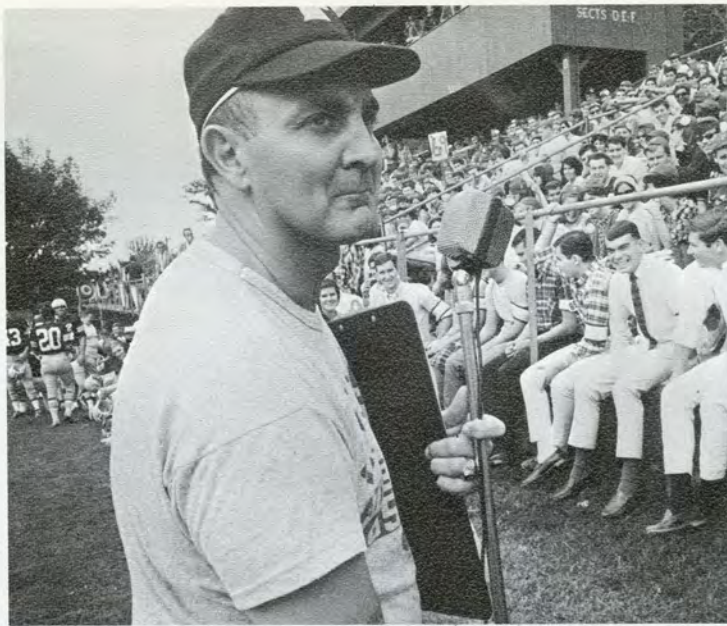




A campus: located on the site of four stately and dignified estates. Twenty-eight major buildings: from east to west, north and south of a huge acreage. Many more gradually appearing, designed for larger classrooms and administrative facilities. People: Just about 3400 full-time undergraduates. Approximately one-third residents, the rest commuters. An awesome phenomena to comprehend: in slightly more than a decade the campus area tripled, the number of students increased fifty per cent, construction successfully kept pace. Growth: an organic process characterized by confusion. For Post, a small school, growth is achieved at great cost.

Growth is a survival trait. That which does not grow must necessarily die. Thus the physical development of a college depends upon a corresponding maturation on the part of the administrators, faculty and staff. They are the agents who re-examine and revise the purposes and curriculum of the college in order to maintain its relevance to the world in which it functions. The universe today encompasses a much broader area than in the past; changes develop at a rapid pace. The burden of response to these changes rests with the permanent population of the college: the faculty, staff, and administration.

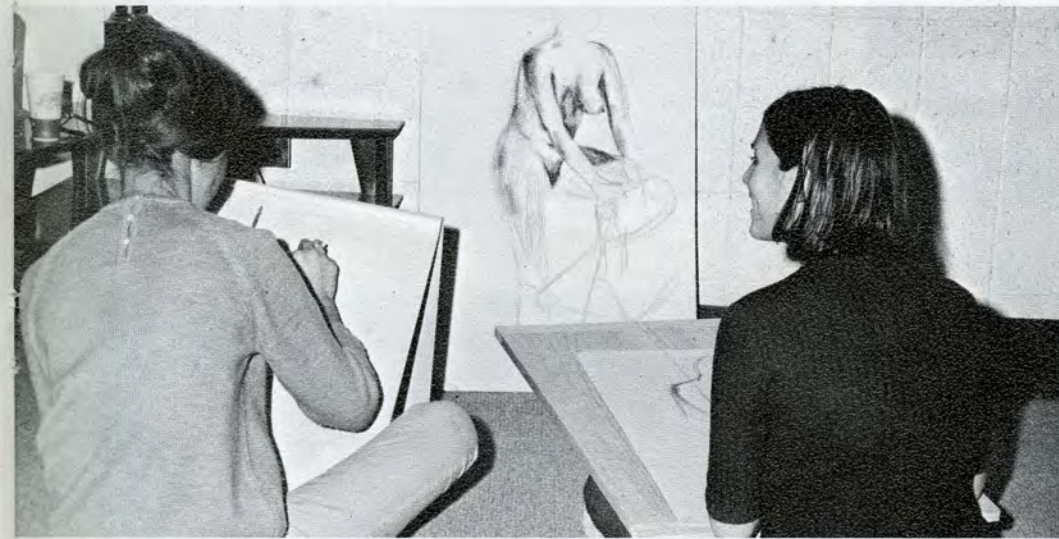






For more than 1000 students, C. W. Post College provides not only an Education, but also a home. The dorm student must, of necessity, be an extraordinary person. Introduced to a new way of life, he must learn to be compatible with people from different areas and backgrounds. Separated from his ties of home, he learns to develop an entirely new way of life. Often he must endure an endless stream of distractions and yet still find time to study.

Despite any disadvantages, during his four year stay, the dorm student gains an abundance of experience. When he leaves C. W. Post, he takes with him, not only a diploma, but also a broader social outlook.





## A Salute to the Class of '66

To the Class of '66 of C.W. Post College, I pen these warm greetings. They are not in the nature of "Hail and Farewell" of the ancient Roman sense but rather: "Hail, Good Luck, and Godspeed" to you who will characterize the final third of the twentieth century. That is the awesome responsibility of members of the Class of '66, of C.W. Post College of Long Island University; of colleges and universities throughout the United States and throughout the world.

This academic year, I visited our sister university, Chung-ang, at Seoul, Korea, and other universities in the Far East. Everywhere, I was impressed by the seriousness of purpose of Far Eastern college students. As Dr. Seong Hi Yim, former President of Chung-ang University who has been a visiting professor at C.W. Post College this year, expressed it: "In Asia, the acceptance by, and sensitivity of, students to the changing and developing world are greater and faster than those of American students."

As you go forth from alma mater, you enter upon a confused and troubled world. The protracted, tortuous conflict in Viet Nam is, in the course of history and in the course of time, but an episode and second. Yet, to those who have fought and bled there it must seem like an eternity. How contrasting are the American G.I.'s, making the supreme sacrifice in the cause of human dignity in a steamy Asian jungle, with the impression of an Asian scholar with American

college students. Our friend, Dr. Yom, declares that "The American student does not see too clearly the perspective of the United States as the symbolic leader of the free nations in a changing world".

Yet, I do believe (as a young C.W. Post alumnus expressed it) that your alma mater has "awakened and sustained a pioneer spirit". Yes, you go forth in perilous times; yet, as the Bible expresses it: "To every thing there is a season, and a time to every purpose". At C.W. Post College, you have not been trained to be passive witnesses but, rather, active participants. You go forth in a time of peril and trial but, also, in a time of challenge and opportunity. May you, as Paul enjoined, "run with endurance this race that is set before" you. Twenty five years ago, when I received my master's degree, I was further enjoined, in the words of Paul, to "fight the good fight of faith" with the hope that we might "lay hold to life eternal". My generation and yours can bear witness to the fact that "education affects eternity". With confidence and faith in you, I say: "Good Luck and Godspeed".

R. GORDON HOXIE  
President, C.W. Post College  
and  
Chancellor, Long Island University





## Italian Club



*Seated:* M. Laxton, Dr. Del Luca—Advisor, P. Scarano—President, S. Scarano—rep, *Standing:* M. Podell, V. Rambach, I. Paraspolo, M. Tucci, L. Moskowitz, E. Briguglio.



## Spanish Club

*Seated:* I. Paraspolo, B. Vulcun, *Standing:* A. Tunick, R. Distel, K. Dohrmann,





Sociology Club



Seated: Dr. Noss, A. Hauptman, L. Forte—Pres., R. Pitrelli—sec'y., Mr. Weinstein—advisor, 2nd Row: I. Shrier, G. Lefer, M. Sacks, L. Savoca, H. Hopper, B. Gipp, J. Hollander, L. Goldstein, F. Kabot, J. Ross, 3rd Row: L. Baumgarten, R. Berke, C. Kastmer, P. Morahan, J. Kehoe, F. Masan, G. Murad, M. Schiffman







# Sigma Alpha Theta

Since its founding on February 9, 1957 Sigma Alpha Theta Sorority has sought as its goals the development of good minds, character, and a closer bond to the Post campus through an active sisterhood. Whether socially or academically, the sisters feel that these goals can only be achieved through the understanding and utilization of their motto, "Sincerity and Truth."

Although the women of SAT have the common bond of sisterhood, each girl is proud of her individuality. In this way she is able to add to the development of her sorority, her school, her friends, and herself. To accomplish this, SAT has sisters participating in nearly every activity on



*L to R:* P. Scheier, secretary; G. Geluso, President; Dr. R. Adams, Advisor; E. Miller, vice-president; G. Lankau, treasurer.



*Seated L to R:* C. Cirillo, A. Burkart, L. Huffman, E. Kneale, B. Stevenson, J. Maurillo, D. Murphy, C. Munz. *Standing L to R:* L. Bizlewicz, P. Milliken, K. Goodman, P. Asta, J. Anderson, N. Cohen, D. Zahn, A. M. Matera, L. Dawson, S. Agnew, V. Machulsky



CO-CAPTAINS



Lucien Veneziano  
*Tackle*



John "Spider" Vittas  
*Tight End*

Senior Stars



Jim Brennan  
*Tackle*



Dennis Craig  
*Tight End*



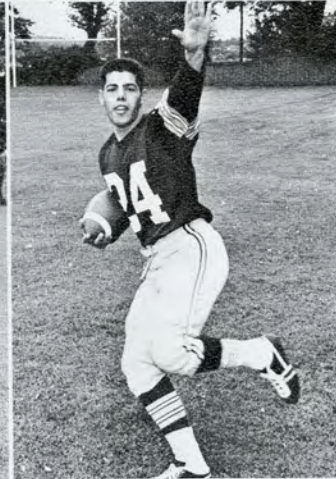
Jim LeClair  
*Quarter Back*



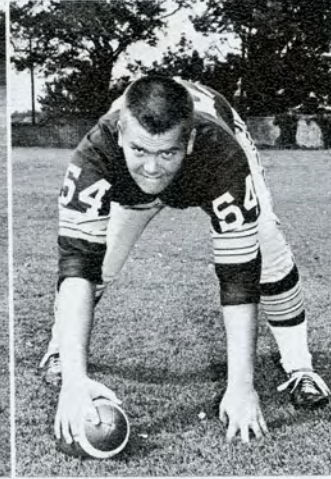
Ray McGreevy  
*Quarter Back*



John Pappalardo  
*Guard*



Mike Russo  
*Flanker Back*



Tim Stapleton  
*Center*



John Woronowich  
*Tackle*



# Senior Ball

